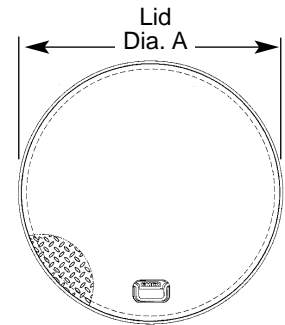
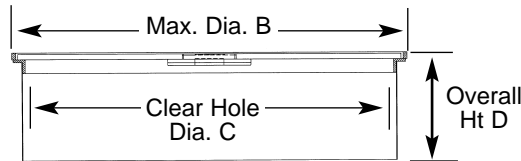
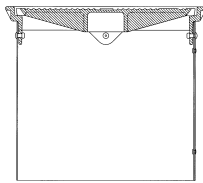


A0717 Standard Manholes

- Open throat design for easy access
- Optional steel or polyethylene skirt (8", 12", 18")
- Bolt-down units have water-resistant lids
- Built-in handle (18")
- Recessed handle (24" - 42")
- Meets AASHTO H20 wheel loading



	Part Number	Style	Skirt	Lid	A	B	C	D	Weight
8"	A0717-188	Lay-in	8" Steel	3/8" Steel	8.6"	10.0"	8.0"	8.0"	14.0 lbs.
	A0717-008	Lay-in	12" Poly	3/8" Steel	8.6"	10.0"	8.0"	12.0"	16.0 lbs.
	A0717-108	Lay-in	12" Steel	3/8" Steel	8.6"	10.0"	8.0"	12.0"	15.4 lbs.
12"	A0717-128	Lay-in	8" Steel	Cast Iron	12.4"	13.8"	11.3"	8.0"	21.8 lbs.
	A0717-022	Lay-in	12" Poly	Cast Iron	12.4"	13.8"	11.3"	12.0"	20.2 lbs.
	A0717-122	Lay-in	12" Steel	Cast Iron	12.4"	13.8"	11.3"	12.0"	25.3 lbs.
18"	A0717-018	Lay-in	10" Steel	Cast Iron	17.3"	18.3"	16.1"	12.0"	52.7 lbs.
	A0717-018A	Lay-in	18" Steel	Cast Iron	17.3"	18.3"	16.1"	18.0"	58.1 lbs.
24"	A0717-024	Lay-in	10" Steel	3/8" Steel	23.6"	24.5"	22.0"	10.0"	70.3 lbs.
	A0717-124	Bolt-Down WR	10" Steel	3/8" Steel	23.6"	24.5"	20.0"	10.0"	69.0 lbs.
30"	A0717-030	Lay-in	10" Steel	3/8" Steel	29.6"	30.5"	28.0"	10.0"	107.3 lbs.
	A0717-030B	Bolt-Down WR	10" Steel	3/8" Steel	29.6"	30.5"	25.0"	10.0"	132.5 lbs.
36"	A0717-036	Lay-in	10" Steel	1/2" Steel	35.6"	36.5"	34.0"	10.0"	189.2 lbs.
	A0717-036B	Bolt-Down WR	10" Steel	1/2" Steel	35.6"	36.5"	31.0"	10.0"	175.0 lbs.
	A0717-136	Lay-in	10" Steel	3/8" Steel	35.6"	36.5"	34.0"	10.0"	173.3 lbs.
	A0717-136B	Bolt-Down WR	10" Steel	3/8" Steel	35.6"	36.5"	31.0"	10.0"	163.5 lbs.
38"	A0717-038	Lay-in	10" Steel	1/2" Steel	39.6"	40.5"	38.0"	10.0"	244.3 lbs.
	A0717-038B	Bolt-Down WR	10" Steel	1/2" Steel	39.6"	40.5"	35.0"	10.0"	238.2 lbs.
	A0717-038C	Lay-in	10" Steel	3/8" Steel	39.6"	40.5"	38.0"	10.0"	203.0 lbs.
42"	A0717-042A	Lay-in	10" Steel	1/2" Steel	44.1"	45.0"	43.0"	10.0"	299.7 lbs.
	A0717-042D	Lay-in	10" Steel	3/8" Steel	44.1"	45.0"	43.0"	10.0"	236.3 lbs.
48"	A0717-048	Lay-in	10" Steel	1/2" Steel	47.0"	48.25"	46.0"	10.0"	332.6 lbs.
	A0717-148	Lay-in	10" Steel	3/8" Steel	47.0"	48.25"	46.0"	10.0"	280.0 lbs.