

Repair your Spill Containment with Stainless Steel



Before



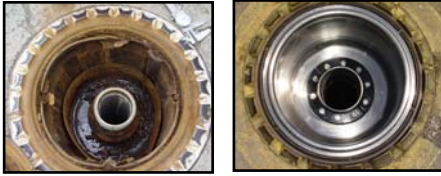
After

Never Break Concrete Again

<u>Model</u>	<u>Page</u>	<u>Model</u>	<u>Page</u>
OPW	2-4	Emco	8-9
Universal	5	Fairfield	10
Pomeco	6	Pemco	10
Franklin Fueling	7	Accessories	11-12

EMCO WHEATON RETAIL CORPORATION

2300 Industrial Park Drive • Wilson, North Carolina 27893
252-243-0150 • 252-243-4603 (fax) • www.emcoretail.com



Before

After



- Cast Iron Cover with Triple Wiper Seal
- Stainless Steel Containment Vessel
- Stainless Steel Bolts
- 2 Piece Flange
- O-ring Seal

Double wall variants include EZ-Gage
For drain options, contact our Customer Service Department (800-234-4394)

Never Break Concrete -
Easily upgrade your existing spill containment without breaking concrete

The containment vessel completely isolates the existing manhole; the lid seals inside the stainless steel vessel

Water-resistant cast iron lid with built-in handle and exclusive triple wiper seal, meets AASHTO H20 wheel loading

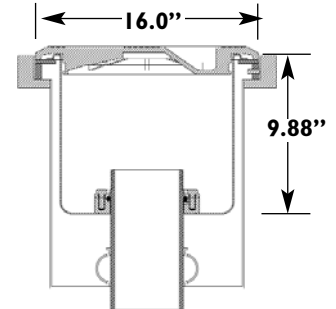
Patent Pending

- Florida DEP #EQ-753
- #EQ-764R (Double Wall)
- North Carolina DENR

OPW 84D



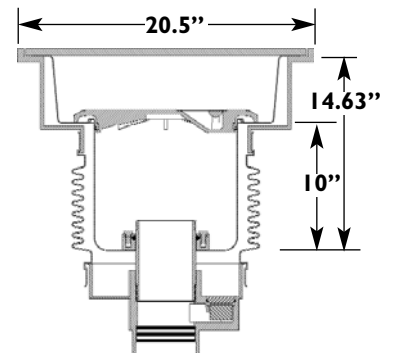
Rim 15.5"; Lid 13.75"



OPW 101BG Below Grade



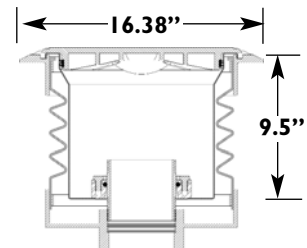
Rim 20.5"; Lid 20.0"



OPW 4000



Rim 16.375"; Lid 13.13"



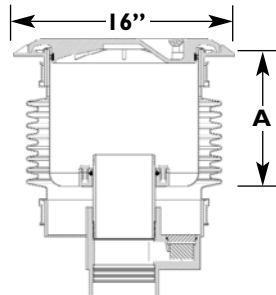
Model No.	Repairs	Weight
A1005-505CBG	OPW 101BG	39.0 lbs.
A1005-505C4	OPW 4000	24.0 lbs.
A1005-505CA	OPW 84D	41.0 lbs.
A1005-505DP4	Drain Plug Kit for OPW 4000	

Refer to pages 11 & 12 for installation and replacement items.

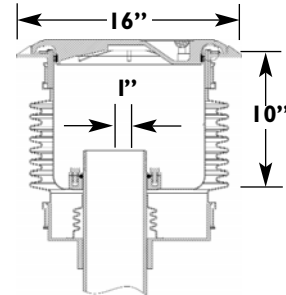
OPW 2100C



Rim 16.0"; Lid 13.75"



OPW 2105

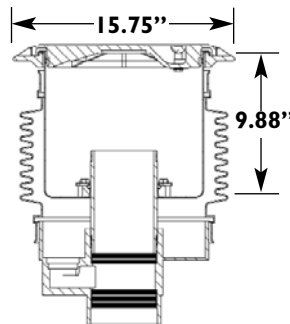


Offset

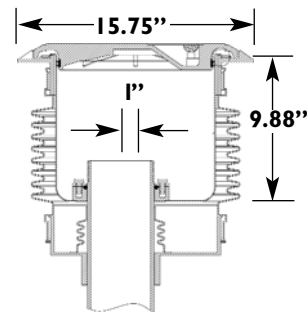
OPW ISC-2100



Rim 15.75"; Lid 12.5"



OPW ISC-2105

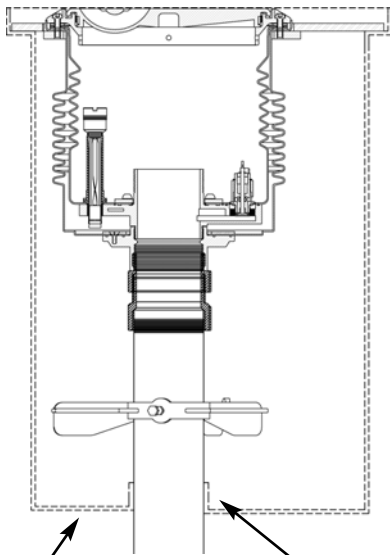
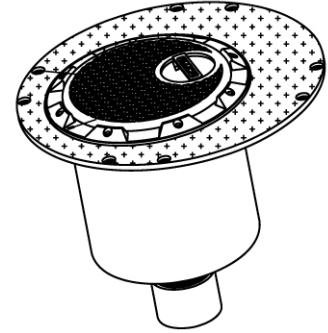


Offset

Model No.	Repairs	Dim. A	Weight
A1005-505C	OPW 2100C	10.0"	31.0 lbs.
A1005-505CDR	OPW 2100C w/Drain	10.0"	30.5 lbs.
A1005-505CS	OPW 2100C Short	8.1"	27.0 lbs.
A1005-505CD	OPW 2100 Double Wall	10.0"	
A1005-505CZ*	OPW 2100C, Crooked Riser	10.0"	30.0 lbs.
A1005-505C5	OPW 2105 Offset		26.0 lbs.
A1005-505CC	OPW ISC-2100		24.0 lbs.
A1005-505CC5	OPW ISC-2105		23.0 lbs.
A1005-505DP	Drain Plug Kit for OPW 2100C	N/A	0.3 lbs.
A1005-505DPE	Drain Plug Kit w/Epoxy	N/A	0.7 lbs.

*Includes an eccentric ring for cases where the riser pipe has shifted.
Refer to pages 11 & 12 for installation and replacement items.

Repairs OPW 500 and 700 Series Buckets



Original
Fiberglass
Secondary

Eliminates need
for existing
rubber boot

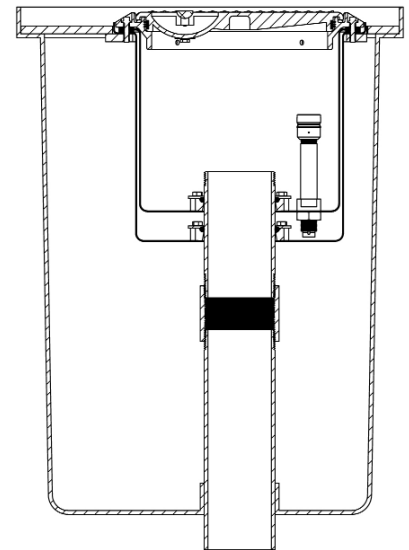
No excavation required - use existing riser pipe

Eliminates all OPW primary and secondary containers

Diamond plate steel lid bolts to existing OPW rim

Spill containment unit includes composite, water-resistant lid with built-in handle and exclusive triple wiper seal; meets H20 load rating

Includes EZ-Gage for instant monitoring of interstitial space



A1004-316R
HDPE Bellows
Thread-On

Full Emco Wheaton warranty on complete double wall bucket

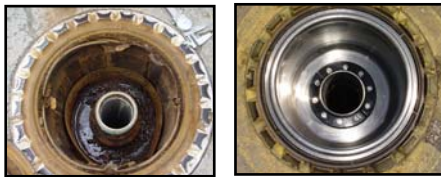
A1005-517R
Stainless Steel
Slip-On

■ Florida DEP #EQ-741

■ Florida DEP #EQ-764R

	Model No.	Application	Drain Type	Weight
HDPE Bellows Thread-On	A1004-316R	Fill/Vapor	Pull/Push	124.0 lbs.
	A1004-317R	Fill/Vapor	None	123.3 lbs.
	A1004-316RSX	Fill	Pull/Push	134.0 lbs.
	A1004-317RSX	Fill	None	133.3 lbs.
Stainless Steel Slip-On	A1005-517R	Fill/Vapor	None	98.0 lbs.
	A1005-517RSX	Fill	None	108.0 lbs.

X variants include A0030-124S Fill Swivel Adapter and A0097-005 Fill Cap



Before

After



- Cast Iron Cover with Triple Wiper Seal
- Stainless Steel Containment Vessel
- Stainless Steel Bolts
- 2 Piece Flange
- O-ring Seal

Double wall variants include EZ-Gage
For drain options, contact our Customer Service Department (800-234-4394)

Never Break Concrete -
Easily upgrade your existing spill containment without breaking concrete

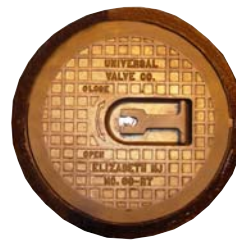
The containment vessel completely isolates the existing manhole; the lid seals inside the stainless steel vessel

Water-resistant cast iron lid with built-in handle and exclusive triple wiper seal, meets AASHTO H20 wheel loading

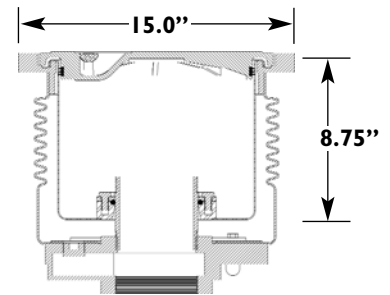
Patent Pending

- Florida DEP #EQ-753
- North Carolina DENR

Universal 69RT, 71CD



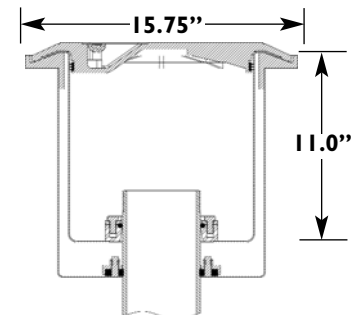
Rim 15"; Lid 12.75"



Universal 70C

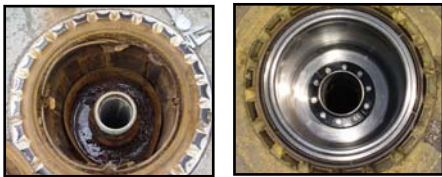


Rim 15.75"; Lid 15"



Model No.	Repairs	Weight
A1005-505CU	Universal 69RT,71CD	26.0 lbs.
A1005-505CU70	Universal 70C	29.0 lbs.
A1005-505DPU	Drain Plug Kit, 69RT,71CD	0.4 lbs.

Refer to pages 11 & 12 for installation and replacement items.



Before

After



- Cast Iron Cover with Triple Wiper Seal
- Stainless Steel Containment Vessel
- Stainless Steel Bolts
- 2 Piece Flange
- O-ring Seal

Double wall variants include EZ-Gage
For drain options, contact our Customer Service Department (800-234-4394)

Never Break Concrete -

Easily upgrade your existing spill containment without breaking concrete

The containment vessel completely isolates the existing manhole; the lid seals inside the stainless steel vessel

Water-resistant cast iron lid with built-in handle and exclusive triple wiper seal, meets AASHTO H20 wheel loading

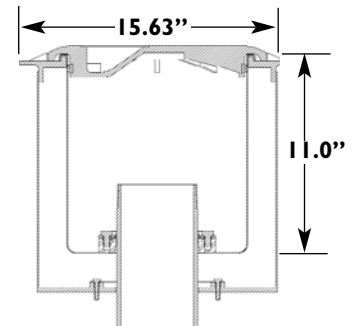
Patent Pending

- Florida DEP #EQ-753
- North Carolina DENR

Pomeco 111KP, 111KB



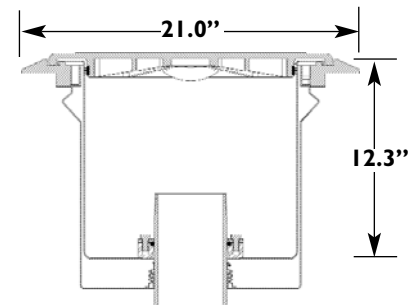
Rim 15.625"; Lid 12.13"



Pomeco 211



Rim 21"; Lid 17.25"



Model No.	Repairs	Weight
A1005-505CPI	Pomeco 111KP, 111KB	25.0 lbs.
A1005-505CP	Pomeco 211	42.3 lbs.

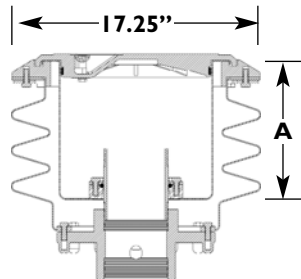
Refer to pages 11 & 12 for installation and replacement items.

Franklin Fueling

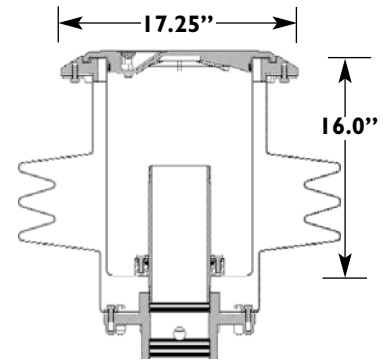
EBW 702, 703, 705



Rim 17.25"; Lid 14"



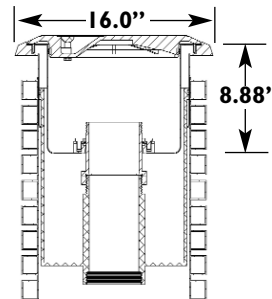
EBW 715, 725



Phil-Tite 400



Rim 16"; Lid 14"



Model No.	Repairs	Dim. A	Weight
A1005-505CE	EBW 702,703,705	9.75"	26.0 lbs.
A1005-505CES	EBW 702,703,705 Short	7.70"	24.9 lbs.
A1005-505CE15	EBW 715,725 15 Gallon	16.00"	30.0 lbs.
A1005-505CF1	Phil-Tite 400		30.0 lbs.
A1005-505DPEB	Drain Plug Kit for EBW 705,715		00.1 lbs.

Refer to pages 11 & 12 for installation and replacement items.



Before

After



- Cast Iron Cover with Triple Wiper Seal
- Stainless Steel Containment Vessel
- Stainless Steel Bolts
- 2 Piece Flange
- O-ring Seal

Double wall variants include EZ-Gage
For drain options, contact our Customer Service Department (800-234-4394)

Never Break Concrete -

Easily upgrade your existing spill containment without breaking concrete

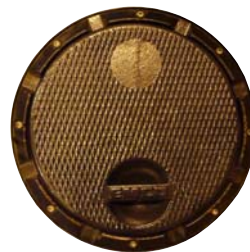
The containment vessel completely isolates the existing manhole; the lid seals inside the stainless steel vessel

Water-resistant cast iron lid with built-in handle and exclusive triple wiper seal, meets AASHTO H20 wheel loading

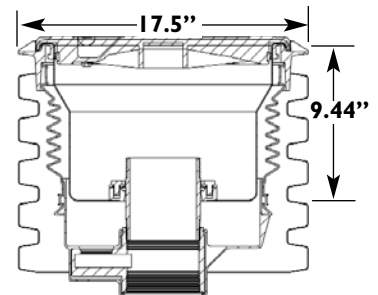
Patent Pending

- Florida DEP #EQ-753
- #EQ-764 (Double Wall)
- North Carolina DENR

Emco A1004-010



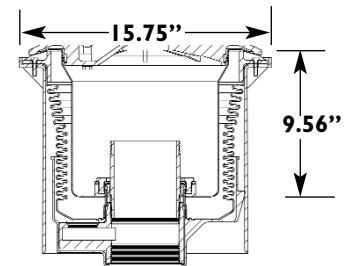
Rim 17.6"; Lid 15.3"



Emco A1003



Rim 15.75"; Lid 15.75"



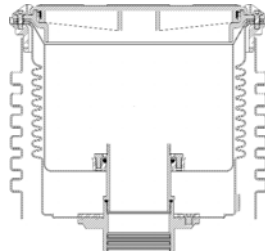
Model No.	Repairs	Weight
A1005-505CEW3	Emco A1004-010 Series	26.0 lbs.
A1005-505CEW4	Emco A1003 Series	28.0 lbs.
A1005-505CEW4D	Emco A1003 Series, Includes Drain	28.3 lbs.
A1005-505DPEW4	Drain Plug Kit, A1003	00.2 lbs.

Refer to pages 11 & 12 for installation and replacement items.

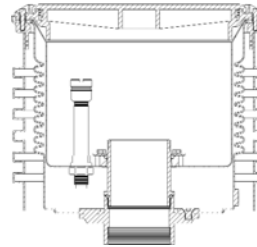
Emco A1004-210 Series



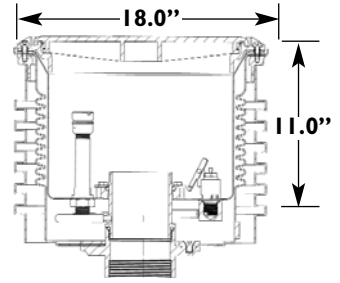
Rim 18"; Lid 15.3"




Kit for Single Wall




Kit for Double Wall



There are two styles of the A1004-210S. Refer to the photos at right to determine which style you are replacing.



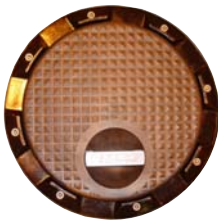
Old Style
Uses bellows with bowl bottom



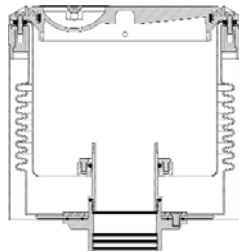
New Style
Uses split flange at riser pipe

***An adapter kit is required for all A1005-505CEWI models.** Refer to the list on page 11 to determine which adapter kit you will need.

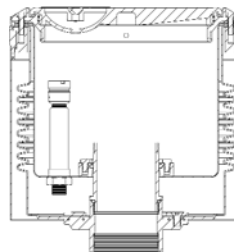
Emco A1004-316 Series



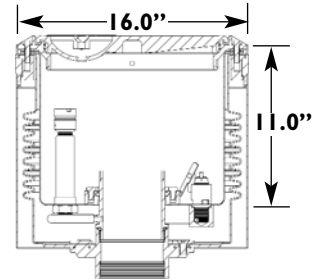
Rim 16"; Lid 13.2"



Kit for Single Wall



Kit for Double Wall

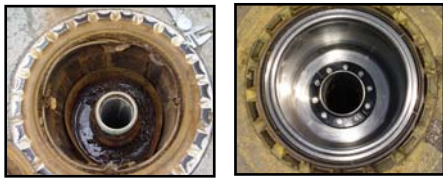


Model No.	Repairs	Weight
A1005-505CEWI*	A1004-210A Single Wall	47.0 lbs.
A1005-505CEWIG*	A1004-210S, Includes Gage	48.2 lbs.
A1005-505CEWIDR*	A1004-210S, Includes Drain & Gage	50.1 lbs.
A1005-505CEW2	A1004-316A Single Wall	36.3 lbs.
A1005-505CEW2G	A1004-316S, Includes Gage	37.5 lbs.
A1005-505CEW2DR	A1004-316S, Includes Drain & Gage	39.4 lbs.

An adapter kit is included with the A1005-505CEW2 models. For buckets that have been installed with the bellows in a stretched position, a taller adapter may be required. See page 11 for a list of adapter kits.

Refer to pages 11 & 12 for installation and replacement items.

Fairfield Pemco



Before

After



- Cast Iron Cover with Triple Wiper Seal
- Stainless Steel Containment Vessel
- Stainless Steel Bolts
- 2 Piece Flange
- O-ring Seal

Double wall variants include EZ-Gage
For drain options, contact our Customer Service Department (800-234-4394)

Never Break Concrete -

Easily upgrade your existing spill containment without breaking concrete

The containment vessel completely isolates the existing manhole; the lid seals inside the stainless steel vessel

Water-resistant cast iron lid with built-in handle and exclusive triple wiper seal, meets AASHTO H20 wheel loading

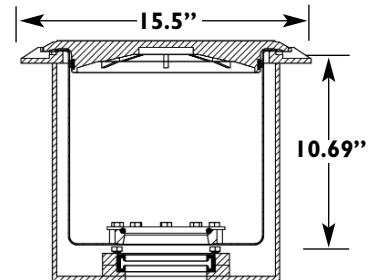
Patent Pending

- Florida DEP #EQ-753
- #EQ-764R (Double Wall)
- North Carolina DENR

Fairfield SCM-5



Rim 15.5"; Lid 13.5"



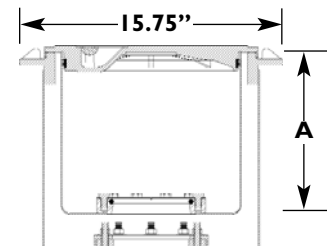
Model No.	Repairs	Weight
A1005-505CF5	Fairfield SCM-5	29.9 lbs.

Refer to pages 11 & 12 for installation and replacement items.

Pemco 112



Rim 15.75"; Lid 13.13"



Model No.	Repairs	Dim. A	Weight
A1005-505CPM	Pemco 112	9.75"	24.0 lbs.
A1005-505CPED	Pemco 112 Double Wall	10.00"	31.0 lbs.

Refer to pages 11 & 12 for installation and replacement items.

Installation - A1005-505C Series

Part No.	Description	Weight
A0081-003	Pipe Nipple Extractor	10.3 lbs.
A0333-002	Hand Pump	1.3 lbs.
A7901-004S	4"x 4" Pipe Nipple	2.3 lbs.
A7901-005S	4"x 5" Pipe Nipple	4.0 lbs.
A7901-006S	4"x 6" Pipe Nipple	3.6 lbs.
A7901-007S	4"x 7" Pipe Nipple	4.7 lbs.
A7901-008S	4"x 8" Pipe Nipple	5.0 lbs.
A7901-009S	4"x 9" Pipe Nipple	5.9 lbs.
A7901-010S	4"x 10" Pipe Nipple	6.8 lbs.
A7901-011S	4"x 11" Pipe Nipple	7.2 lbs.
A7901-012S	4"x 12" Pipe Nipple	9.2 lbs.
Z0839-001	Sealant	1.2 lbs.



A0081-003 Pipe Nipple Extractor



NPSM

NPT

The A7901 Pipe Nipples are zinc plated. The top threads are NPSM, allowing additional seal surface to aid in the installation of the stainless steel insert.

Adapter Kits

Please call our Customer Service Department (800-234-4394) for assistance in selecting the appropriate adapter. "P" variants include a drain port.

Part No.	Height	Description	Weight
A7901-304K	4.00"	A1005-505CEW1*, CEW2	4.0 lbs.
A7901-304KP	4.00"	A1005-505CEW1*, CEW2	4.1 lbs.
A7901-305K	5.50"	A1005-505CEW1*, CEW2	6.0 lbs.
A7901-305KP	5.50"	A1005-505CEW1*, CEW2	6.1 lbs.
A7901-306K	6.50"	A1005-505CEW1*, CEW2	7.5 lbs.
A7901-306KP	6.50"	A1005-505CEW1*, CEW2	7.6 lbs.
A7901-404K	6.25"	A1005-505CEW1**, other applications	
A7901-404KP	6.25"	A1005-505CEW1**, other applications	
A7901-405K	7.25"	A1005-505CEW1**, other applications	
A7901-405KP	7.25"	A1005-505CEW1**, other applications	
A7901-406K	8.25"	A1005-505CEW1**, other applications	
A7901-406KP	8.25"	A1005-505CEW1**, other applications	
A7901-505K	4.25"	A1005-505CFI, other applications	5.3 lbs.



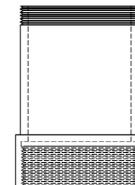
A7901-304K Adapter Kit



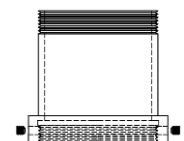
A7901-304K NPSM Male Thread



A7901-304KP With Drain Port



A7901-404K NPT Thread



A7901-505K NPSM Thread

*New Style
A1004-210S
Uses split flange at riser pipe



**Old Style
A1004-210S
Uses bellows w/ bowl bottom



Lids

Lid Part No.	Spill Containment Model No.	Material	Lid Dia.	Weight
A1005-505CL	A1005-505C, CDR, C5, CA, CBG, CD, CS, CZ	Cast Iron	13.7"	16.6 lbs.
A1005-505CCL	A1005-505CC, CC5	Cast Iron	12.4"	16.6 lbs.
A1005-505CEL	A1005-505CE, CE15, CES	Cast Iron	13.7"	16.6 lbs.
A1005-505CFLI	A1005-505CFI	Cast Iron	13.9"	16.5 lbs.
A1005-505CF5L	A1005-505CF5	Cast Iron	13.5"	15.5 lbs.
A1005-505SCL4	A1005-505C4	Cast Iron	12.8"	12.3 lbs.
A1005-505CPEML	A1005-505CPEM	Cast Iron	12.8"	15.0 lbs.
A1005-505CPL	A1005-505CP	Cast Iron	17.6"	26.5 lbs.
A1005-505CPLI	A1005-505CPI	Cast Iron	12.2"	16.0 lbs.
A1005-505CUL	A1005-505CU	Cast Iron	12.8"	16.0 lbs.
A1005-505CUL70	A1005-505CU70, CEW4	Cast Iron	15.0"	18.5 lbs.
A1004-210LID	A1005-505CEW1, CEW1DR	Cast Iron	15.3"	20.0 lbs.
A1004-316LID	A1005-505CEW2, CEW2DR	Cast Iron	13.2"	6.6 lbs.
A1005-505CEW3L	A1005-505CEW3	Cast Iron	15.4"	21.5 lbs.



Lid Replacement Seals

Part No.	Description
567166K	Triple Wiper Seal A1004-210LID; 493806
568961	Triple Wiper Seal A1005-505C Series
570012	Triple Wiper Seal A1004-316LID, A1005-505CPL
570518	Triple Wiper Seal A1005-505CPLI

Testing Equipment

Part No.	Description	Weight
A1004-210TEST	Test Unit	6.5 lbs.
494833	Test Cover	4.5 lbs.
494854	Test Cover A1005-505CP only	



A1004-210TEST



494833

All units except A1005-505CP