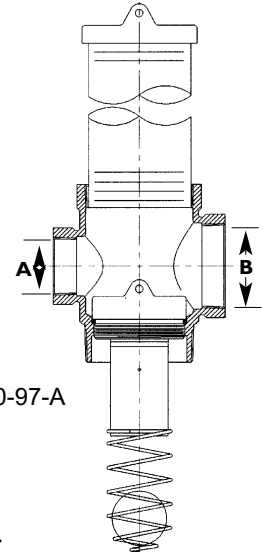


The Emco Wheaton A0079 Extractor Assembly consists of a cast iron extractor body and an internal "bar style" cage. This cage holds any length of A0075 Ball Float (sold separately). The A0079 may be ordered with a variety of port combinations to accommodate tank venting and Stage II vapor recovery piping. The A0079 is also available without an extractor cage for applications that do not require the use of a ball float and is an economical alternative for direct manifold systems.



■ CARB Executive Order G-70-97-A

### Cross Style

Model No.	Top/Bottom Thread	Outlet Threads A & B	Cage Size	Weight
<b>Extractor with Cage</b>				
A0079-019	4"	3" x 2"	2"	10.5 lbs.
A0079-020	4"	2" x 2"	2"	9.6 lbs.
A0079-025	4"	3" x 3"	2"	10.9 lbs.
A0079-027	4" BSP	3" x 2" BSP	2"	10.5 lbs.
A0079-028	4" BSP	2" x 2" BSP	2"	9.6 lbs.
<b>Extractor Body only</b>				
A0079-043	4" BSP	2" x 2" BSP	N/A	8.5 lbs.
A0079-044	4" BSP	3" x 2" BSP	N/A	9.4 lbs.
A0079-050	4"	2" x 2"	N/A	8.5 lbs.
A0079-051	4"	3" x 2"	N/A	9.4 lbs.
A0079-052	4"	3" x 3"	N/A	9.8 lbs.



### Tee Style

Model No.	Top/Bottom Thread	Outlet Threads B	Cage Size	Weight
<b>Extractor with Cage</b>				
A0079-119	4"	3"	2"	9.8 lbs.
A0079-120	4"	2"	2"	8.5 lbs.
A0079-122	4" BSP	2" BSP	2"	8.5 lbs.
A0079-123	4" BSP	3" BSP	2"	9.8 lbs.
<b>Extractor Body only</b>				
A0079-150	4"	2"	N/A	7.1 lbs.
A0079-152	4"	3"	N/A	8.7 lbs.
A0079-444	4"	4"	N/A	8.7 lbs.



**Optional Items:** Extractor wrench - A0560-003



The Emco Wheaton **A0179 2" Extractor Cage** is compatible with the Emco Wheaton A0079 Extractor Valve and A0075 Ball Float.



The Emco Wheaton **A0279 Extractor Cage Test Plug** is designed for performing pressure decay tests on your underground piping and storage tank systems.

### Emco Wheaton Retail Corporation

2300 Industrial Park Drive • Wilson, North Carolina 27893  
252-243-0150 • 252-243-4603 (fax) • [www.emcoretail.com](http://www.emcoretail.com)