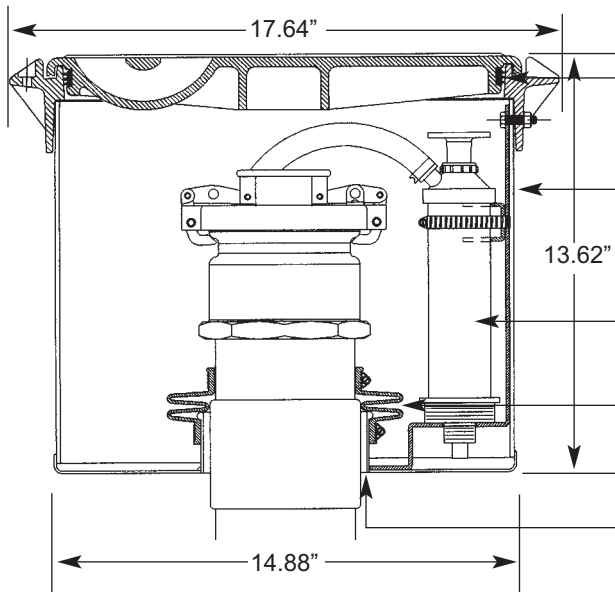


Location for ID Tag
Snow Plow Resistant Ductile Iron Lid and Rim
Offset Handle for Easy Opening



Exclusive Triple Wiper Seal
Epoxy Coated Steel Spill Container
Optional A0333 Hand Pump with Mounting Bracket
Stainless Steel Clamps with Buna Bellows to Compensate for Frost Heave and Tank Movement
Clearance for 4" Pipe Coupling

Guide Specification: Grade level spill containment manhole with 14 inch diameter opening. Lid and rim constructed of ductile iron capable of withstanding DOT H-20 load rating and outfitted with triple wiper blade seal. All rubber components meet UL 57 requirements for fuel compatibility. All components in contact with back fill material or ground water are coated steel.

<u>Item Number</u>	<u>Description</u>	<u>Container</u>	<u>Riser</u>
A1005-001	Spill Containment, 5 Gallon	Epoxy Coated Steel	4"
A1005-002	Spill Containment, 5 Gallon	Epoxy Coated Steel	3"

<u>Optional Items</u>	
A0333-002	Hand Pump
A0333-003	Hand Pump with Mounting Bracket

<u>Replacement Parts</u>	
493806	Lid and Seal
493855	Bellows Assembly 4"
493856	Bellows Assembly 3"
567166	Seal 493806 Lid

Emco Wheaton Retail Corporation

2300 Industrial Park Drive • Wilson, North Carolina 27893
Phone: 252-243-0150 • Fax: 252-243-4603 • www.emcoretail.com

Form: O-1005
Date: 01/08