

EMCO®
WHEATON RETAIL

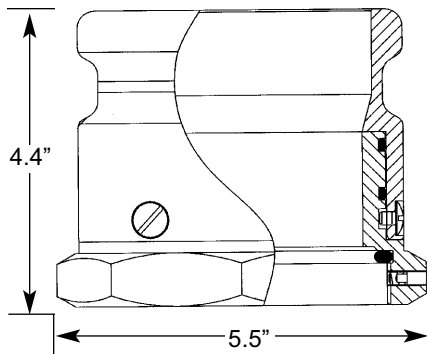
A0030-124S/A0076-124S Swivel Adapters



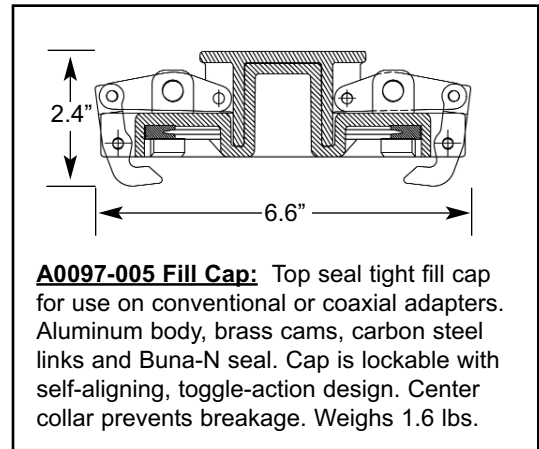
Phase I EVR Approved • EPA Compliant

EMCO WHEATON RETAIL CORPORATION

2300 Industrial Park Drive • Wilson, North Carolina 27893
252-243-0150 • 252-243-4603 (fax) • www.emcoretail.com



A0030-124S
Swivel Fill Adapter



A0097-005 Fill Cap: Top seal tight fill cap for use on conventional or coaxial adapters. Aluminum body, brass cams, carbon steel links and Buna-N seal. Cap is lockable with self-aligning, toggle-action design. Center collar prevents breakage. Weighs 1.6 lbs.

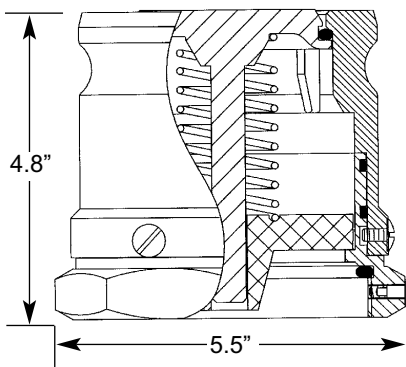
Guide Specification: Swivel tight fill adapter for use with conventional or dual point fill systems. Brass construction. Buna-N gasket for positive seating on standard riser pipes. Recessed threads. 4" cam and groove. The swivel feature prevents accidental loosening of threads. Incorporates a locking system of two set screws located 90 degrees apart. These screws are tightened onto the riser pipe threads after the adapter is properly torqued in place, preventing the hose torque from the product fill process from affecting the seal of the adapter to the riser pipe. The dual Viton® o-rings are field replaceable. Weighs 8.0 lbs.

Viton® is a registered trademark of DuPont Dow Elastomers.

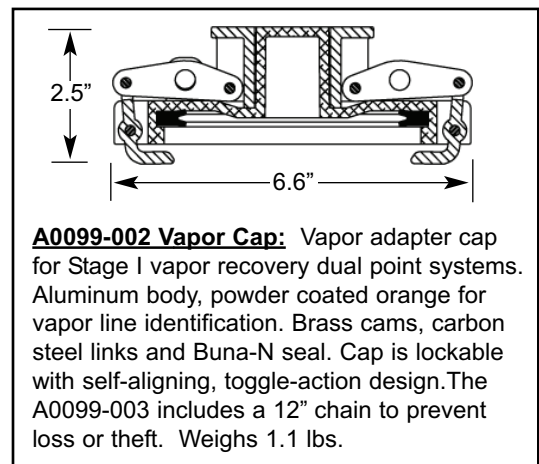
Optional Items

- 409628 Gasket replacement
- 494301 O-ring replacement kit (includes 2 o-rings)
- A0081-001C Adapter installation tool

Phase I EVR Approval
Executive Order VR-105-A



A0076-124S
Swivel Vapor Adapter



A0099-002 Vapor Cap: Vapor adapter cap for Stage I vapor recovery dual point systems. Aluminum body, powder coated orange for vapor line identification. Brass cams, carbon steel links and Buna-N seal. Cap is lockable with self-aligning, toggle-action design. The A0099-003 includes a 12" chain to prevent loss or theft. Weighs 1.1 lbs.

Guide Specification: Swivel vapor adapter for use in dual point fill systems on the vapor return line. Brass construction, Buna-N gasket. Poppet design seals off the vapor path. External lugs on the adapter body for easy installation. 4" cam and groove. The swivel feature prevents accidental loosening of threads. Incorporates a locking system of two set screws located 90 degrees apart. These screws are tightened onto the riser pipe threads after the adapter is properly torqued in place, preventing the hose torque from the product fill process from affecting the seal of the adapter to the riser pipe. The dual Viton® o-rings are field replaceable. Weighs 8.9 lbs.

Viton® is a registered trademark of DuPont Dow Elastomers.

Optional Items

- 409628 Gasket replacement kit
- 494301 O-ring replacement kit (includes 2 o-rings)
- A0081-001C Adapter installation tool

Phase I EVR Approval
Executive Order VR-105-A